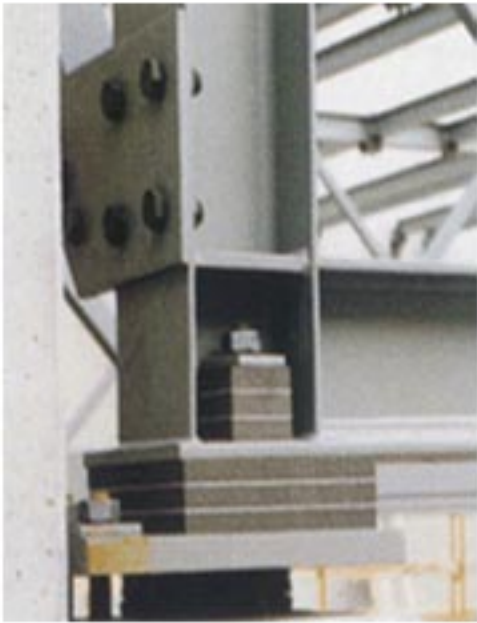


CDM

CDM-ISO-MACHINE-FIX

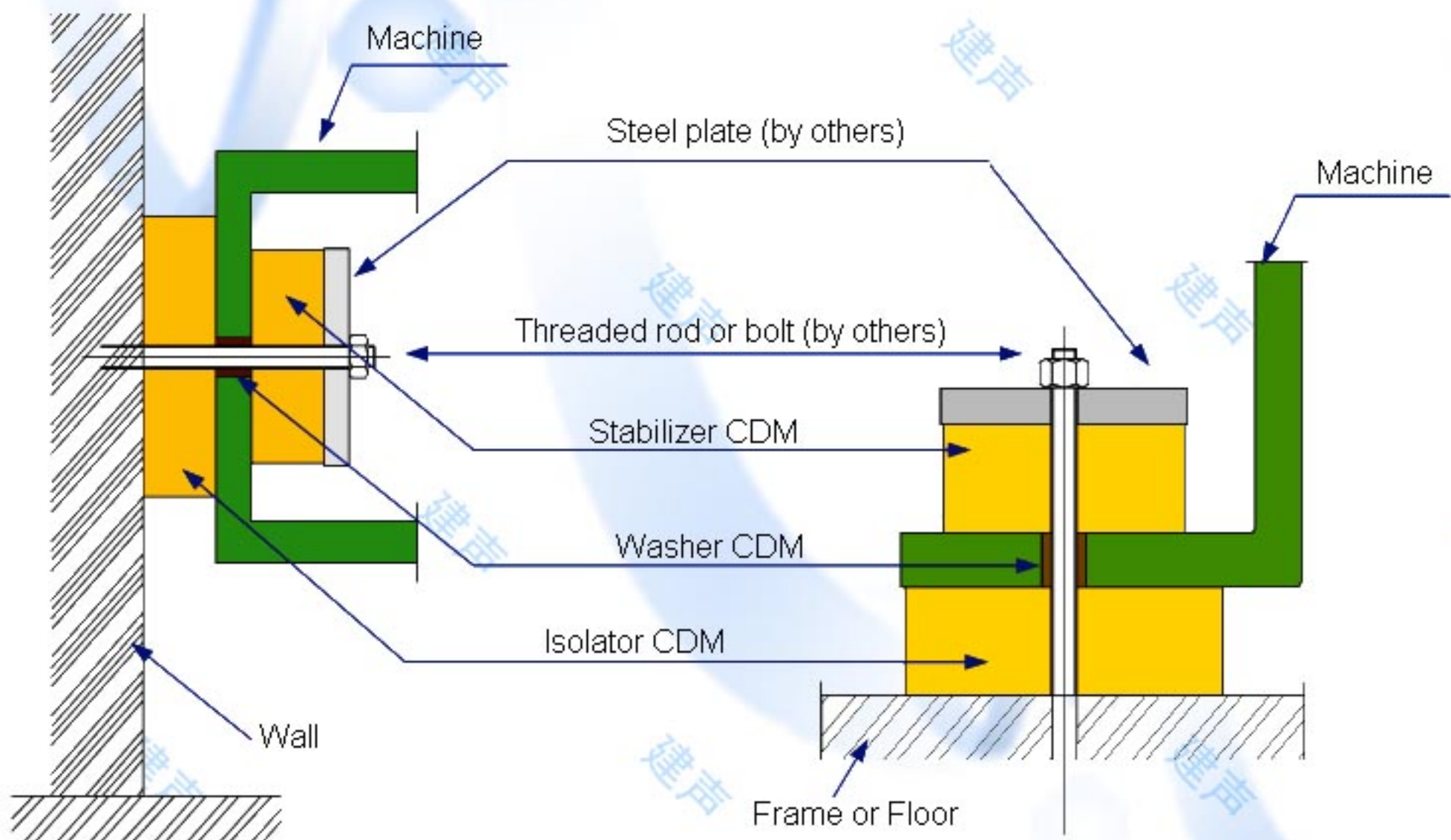


CDM-ISO-MACHINE-FIX offers a simple and cost effective means of providing vibration isolation to machines that generate medium horizontal forces.

The system consists of an isolator, stabiliser and isolating washer and can be used to fix a range of machines to floors, walls and ceilings, typically generators, alternators etc....

The system can be used to provide levelling for the machine and can be tuned to any frequency of 6Hz or more.

The system is designed to suit each application according to the type of machine, the weight of machine and the required natural frequency.

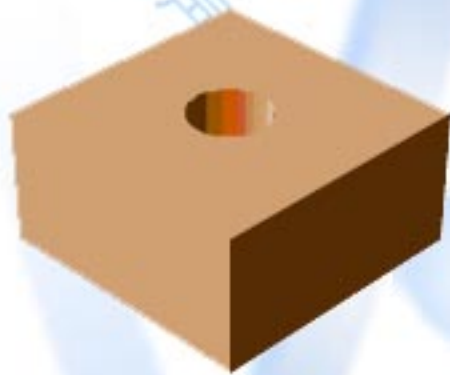


Horizontal and vertical CDM-ISO-MACHINE-FIX setup

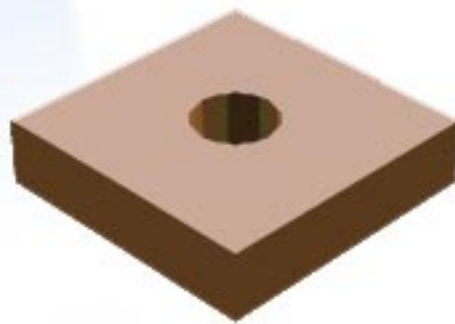
CDM

CDM-ISO-FIX-PAD

Job Type	CDM is OEM of certain resilient components used in the
Start of supply	compressors of Atlas Copco
Number of parts	since 1996
Main product	approx. 10
Departments	Corkrubber of the family CDM-CR



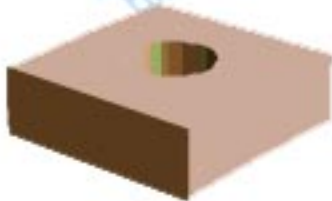
PAD CDM-64 40X40X20 Ø12mm



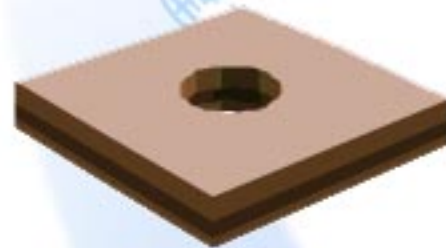
PAD CDM-62 40X40X10 Ø12mm



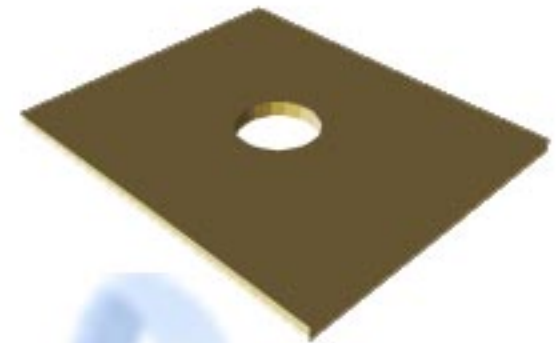
PAD CDM-64 30X30X20 Ø12mm



PAD CDM-62 30X30X10 Ø12mm



PAD CDM-62/71 50X50X8.5 Ø17mm



PAD CDM-61 120X100X5 Ø26mm



PAD CDM-64 40X30X15 Ø13mm



PAD CDM-64 100X55X15 2XØ15mm



WASHER CDM-61 50/26/5 + 36/26/10

CDM

CDM-ISO-ELEVATOR-FIX

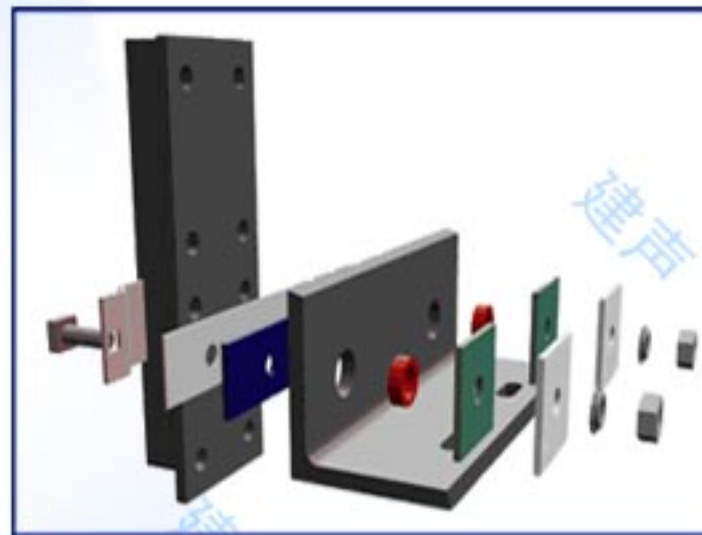
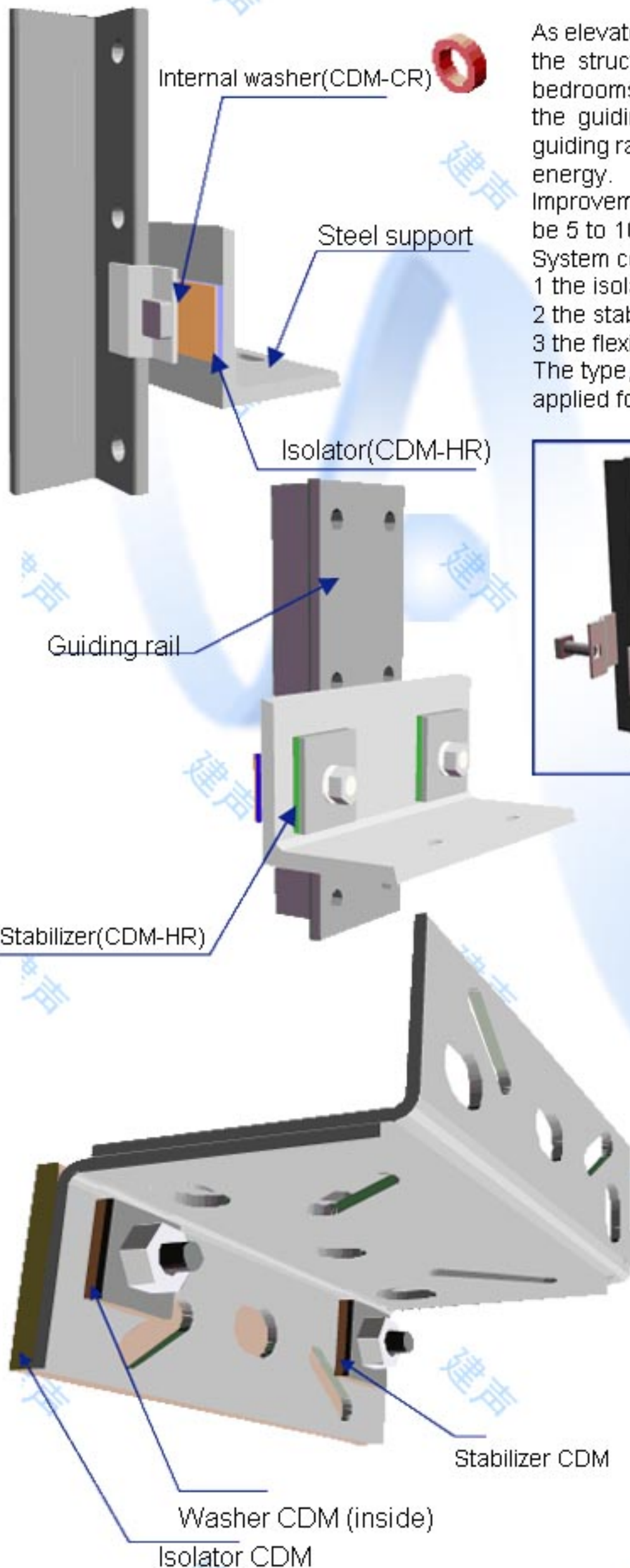
As elevators travel up and down a building they transmit vibration and noise into the structure, often creating disturbance to noise sensitive spaces such as bedrooms, meeting rooms etc. The main source of vibration transmission is via the guiding rails. CDM-ISO-ELEVATOR-FIX is a system that decouples the guiding rails from the shaft structure, hence significantly reducing the transmitted energy.

Improvements of re-radiated noise levels to adjacent spaces can be expected to be 5 to 10dB.

System components:

- 1 the isolator
- 2 the stabilisers
- 3 the flexible washers

The type, size, shape and thickness of these elements depends on the lift type, applied forces, performance requirements and other job specific criteria.



Close up view of the fixation device



SITUATION:

Thyssen-Krupp, one of the most important elevator manufacturers, won a job for the installation of 2 (electrical) elevators in a luxury residential building, located at Rua do Quelhas, 28.

PROBLEM:

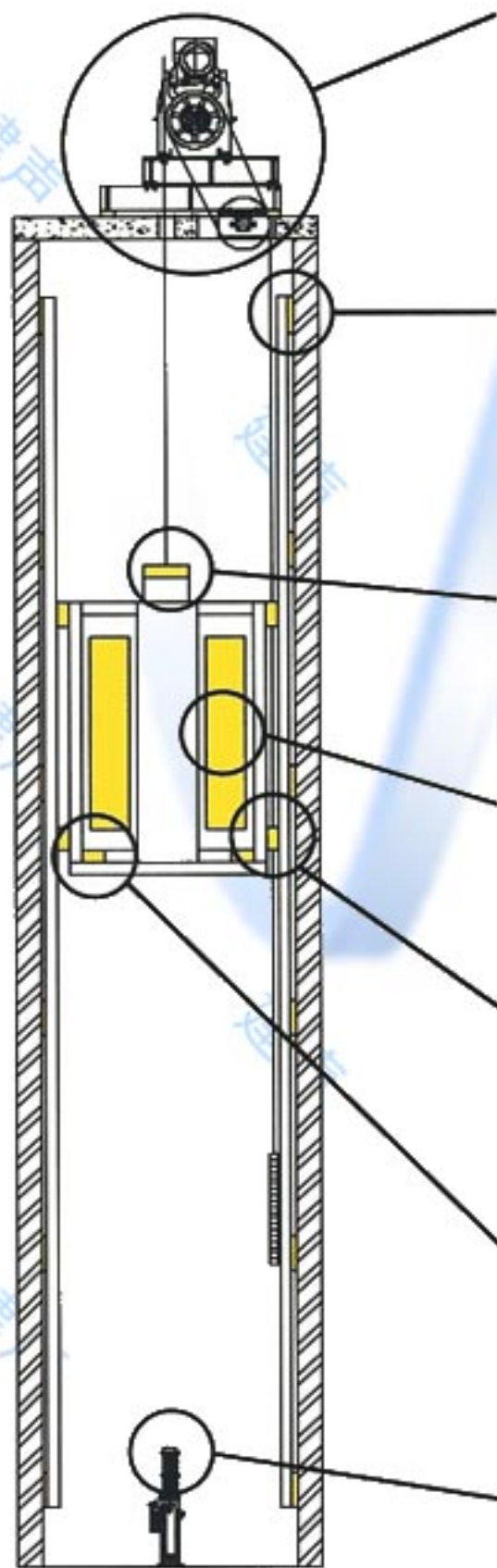
The Acoustical Consultant defined very low noise levels inside the building, whereas the elevator shafts were located next to some sleeping rooms.

SOLUTION:

The use of a CDM ISO-ELEVATOR-FIX isolation system nearly based on CDM-HR materials of 10mm thick (see drawing) to completely decouple the guiding rail fixations from the shaft walls.

CDM

CDM-ISO-ELEVATOR-FIX



1. Machine vibration isolation bearings
e.g. CDM-79, CDM-80, CDM-81, CDM-82 or CDM-83

2. Guiding rail isolation
e.g. CDM-ISO-FIX

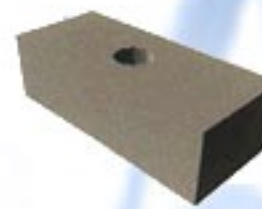
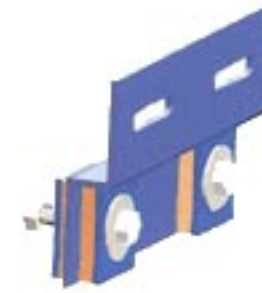
3. Suspension plate isolation
e.g. CDM-81/63

4. Damping treatment sheet
e.g. DM-34, CDM-01, CDM-15, CDM-17

5. Cabin-guiding rail shock absorber
e.g. CDM-80, CDM-82

6. Cabin structural frame decoupling
e.g. CDM-81

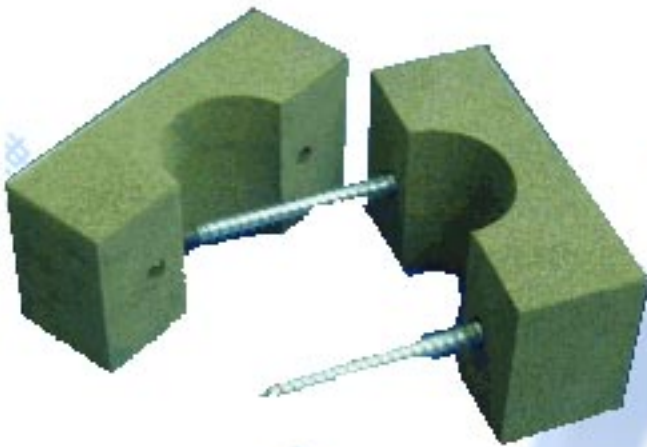
7. Impact bearing
e.g. CDM-34



The systems above are examples of possible solutions to noise and vibration problems in elevator systems. The type and shape of each item can be adapted to specifications of the customer. When all these isolation systems are combined, excellent airborne and structure-borne noise isolation is obtained both in the cabin and in areas adjacent to the elevator shaft. Some of our customers: Otis, Kone, Ebel, Thyssen, Sodimas, Soulier.

CDM

CDM-ISO-PIPE-FIX

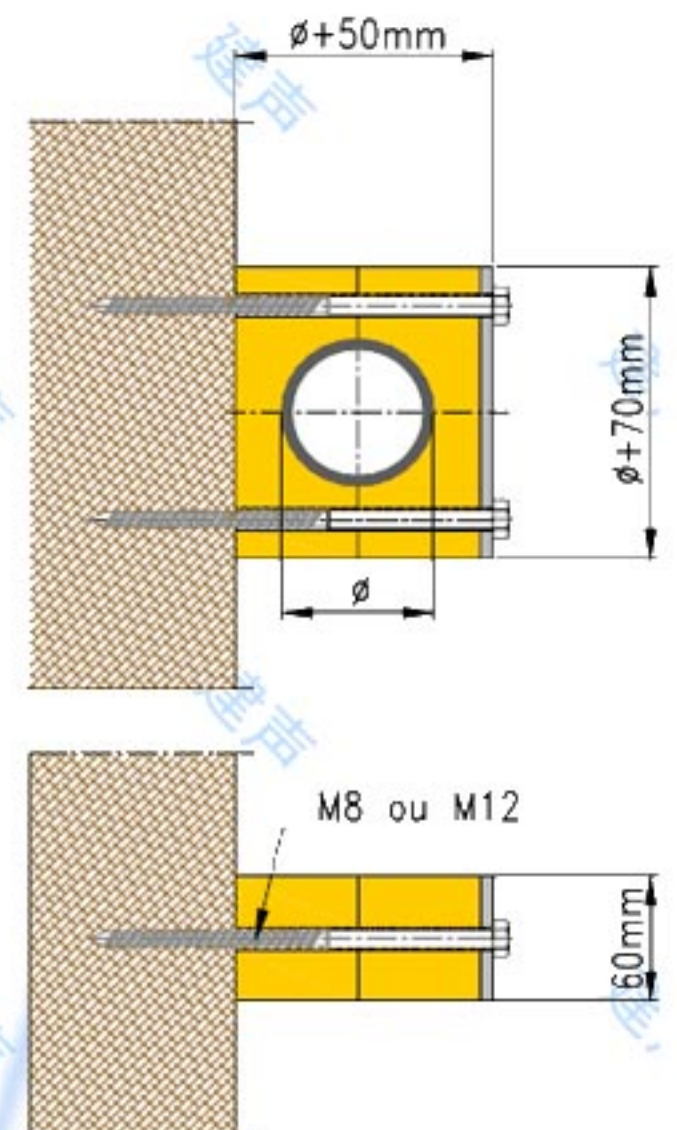


Pipes can often transmit noise and vibration to the supporting structures if they do not have the correct fixation. CDM-ISO-PIPE is a simple, tailor-made fixation system for pipes that minimises the amount of vibration and noise transmitted to the supporting structure.

The system is available for pipe diameters up to 100 mm, is extremely easy to install and can be used indoors and outdoors in any climate conditions.

Required data for design:

- 1 Pipe contact temperature
- 2 Pipe diameter and thickness
- 3 Number of pipes to be isolated
- 4 Nature and orientation of supporting surface
- 5 Excitation frequency spectrum (if available)



The system is available for pipe diameters up to 100 mm, is extremely easy to install and can be used indoors and outdoors in any climate conditions.

THE SYSTEM IS A CUSTOMIZED DESIGN TO SUIT PROJECT SPECIFIC REQUIREMENTS AND CRITERIA